



TAMA[®]

NEW FOR 2025

ALL THE INFORMATION IS STRICTLY CONFIDENTIAL UNTIL **09/01/2025**



LIMITED STARCLASSIC WALNUT BIRCH DRUM KIT WITH BOSSE FONCE OUTER PLY

This limited edition Starclassic Walnut/Birch features a hybrid shell combining the warm, rounded mid-low tones of walnut with the solid attack of birch. A unique Bosse Fonce wood outer ply offers a dynamic & unique aesthetic. The wood grain is perfectly complemented by a Vermillion Bosse Fonce Fade finish and contrasted with black nickel hardware for a sleek and luxurious appearance.



COLOR Vermillion Bosse Fonce Fade -VBF

WBS52RZBBS basic kit

Including:
 22"x16" bass drum
 10"x7" tom tom
 12"x8" tom tom
 14"x12" floor tom
 16"x14" floor tom
 MC69 single tom attachments x 2

[add-on]
 14"x6.5" snare drum



Shell: TT/FT/SD: 6mm, 4ply Birch + 1 outer ply Bosse Fonce + 2 inner ply American Black Walnut

BD: 8mm, 5ply Birch + 1 outer ply Bosse Fonce + 2 inner ply American Black Walnut



Vermillion Bosse Fonce Fade (VBF)



Black Nickel Shell Hardware

ADD-ON SNARE DRUM



WBS65BB
 Size: 14"x6.5"

WBS65BB

Shell: 6mm, 4ply Birch + 1 outer ply Bosse Fonce + 2 inner ply American Black Walnut
 Size: 14"x6.5"
 Lug: MSL-SCTBN
 Hoop: Die-Cast Hoops (10 hole)
 Strainer/Butt: MLS30ABN/MLS30BBN
 Snare Wire: Super Sensitive Hi-Carbon Snare Wires (MS20RL14C)
 Color: Vermillion Bosse Fonce Fade (VBF)



LIMITED CLUB-JAM PANCAKE DRUM KIT WITH BLACK NICKEL SHELL HARDWARE

The Club-JAM Pancake is known for its lightweight weight and minimalist design. Featuring sleek Black Nickel hardware. Available in two color options: a sophisticated Burgundy Walnut Wrap (BWW) and a vibrant Electric Yellow (ELY).



COLOR Electric Yellow -ELY

LJK48PBN basic kit

- Including:
- 18"x4" bass drum
 - 10"x3.5" tom tom
 - 13"x3.5" floor tom
 - 12"x4" snare drum
 - single tom attachment



Ultra-Shallow Pancake Shell



Vintage Inspired Bass Drum Hoop



Black Nickel Shell Hardware

AVAILABLE FINISHES



Electric Yellow (ELY)



Burgundy Walnut Wrap (BWW)



COLOR Marine Shoreline Movingui Fade -VMMF

Starclassic Maple (ME42TZS) w/Chrome HW

Including:
22"x16" bass drum
10"x7" tom tom
12"x8" tom tom
16"x16" floor tom

[add-on]
14"x6.5" snare drum



COLOR Satin Burgundy Elm -SBE

Club-JAM

LJL48S 4pcs basic kit

Including:
18"x12" bass drum
10"x7" tom tom
14"x7" floor tom
13"x5" snare drum
single tom holder
cymbal holder

LJL48H4 4pcs basic kit w/ Hardware

Including:
18"x12" bass drum
10"x7" tom tom
14"x7" floor tom
13"x5" snare drum
single tom holder
hi-hat stand
drum pedal
snare stand
cymbal holder
drum throne



COLOR Indigo Sparkle -ISP

Club-JAM Mini

LJK28S 2pcs basic kit

Including:
18"x7" bass drum
12"x5" snare drum

LJK28H4 2pcs basic kit w/ Hardware

Including:
18"x7" bass drum
12"x5" snare drum
hi-hat stand
drum pedal
snare stand
drum throne

LJKT10F14 Add-on pack

Add-on tom and floor tom package is sold separately.
10"x7" tom tom, 14"x7" floor tom, single tom attachment.



REGULAR NEW FINISHES



COLOR Indigo Sparkle -ISP

Club-JAM Flyer

LJK44S 4pcs basic kit

Including:
14"x10" bass drum w/ bass drum lifter
8"x6" tom tom
10"x9" floor tom
10"x5" snare drum
single tom holder

LJK44H4 4pcs basic kit w/ Hardware

Including:
14"x10" bass drum w/ bass drum lifter
8"x6" tom tom
10"x9" floor tom
10"x5" snare drum
single tom holder
hi-hat stand
drum pedal
snare stand
drum throne





REGULAR SNARE DRUMS

S.L.P. MOD BUBINGA

The S.L.P. Mod Bubinga 12" snare drum opens the door to new sonic possibilities. While the smaller 12" size commonly delivers a bright & sharp sound, making the shell deeper significantly increases its tonal range. The Mod Bubinga features a 7" depth, adding a distinctively dynamic tone to the smaller shell that may have otherwise been unachievable. Made of Bubinga, a naturally low, rich & resonant wood, the 12x7" snare maintains significant body with solid crack. Additionally, the snare is fitted with TAMA's Sound Arc hoops that deliver a crisp, clear attack and allow the snare to resonate naturally and openly with distinct definition.

Boasting a wide tuning range, the Mod Bubinga responds naturally & sensitively to each hit while still capturing every intricate detail, even at lower tunings. Perfect for Hip-Hop, Trap, and Electronic Music, the Mod Bubinga is for the drummer looking to explore & expand their sound with an infinitely expressive snare drum in a small package. The Mod Bubinga leads drummers into a new world of innovative expression.



LBU127

Shell: 6.0mm, 9ply Bubinga

Size: 12"x7"

Hoops: Sound Arc Hoop (6 hole)

Batter side: 2.3mm

Snare side: 1.6mm

Lugs: MSL-SCT

Strainer / Butt: MLS30A/MLS30B

Snare Wire: Starclassic 20-strand Carbon Steel Snare Wires

Head: Evans® G1 Coated / Evans® Snare Side

Finish: Satin Bubinga (SBG)



6.0mm, 9ply Bubinga Shell



Sound Arc Hoop (6 hole)



20-strand Carbon Steel Snare Wires





LIMITED S.L.P. MOD BUBINGA ARTIST MODELS

S.L.P. MOD BUBINGA – CLAY AESCHLIMAN MODEL

This S.L.P. Mod Bubinga “Artist Model” is a special collaboration with Clay Aeschliman of Polyphia. Based on the regular LBU127, this version features an EVANS Genera HD Dry batter head for a tight and fat sound with a custom Galactic Purple finish, perfectly complementing Clay’s sound & style. In higher tunings, the smaller 12” diameter shell delivers a full & strong sound thanks to Bubinga and its unique 7” depth.



LBU127C

Shell: 6.0mm, 9ply Bubinga
Size: 12”x7”
Hoops: Sound Arc Hoop (6 hole)
Batter side: 2.3mm
Snare side: 1.6mm
Lugs: MSL-SCT
Strainer / Butt: MLS30A/MLS30B
Snare Wire: Starclassic 20-strand Carbon Steel Snare Wires
Head: Evans® Heavy Duty Dry / Evans® Snare Side
Finish: Galactic Purple (GPP)



6.0mm, 9ply Bubinga Shell



Evans® Heavy Duty Dry Drumhead



Galactic Purple (GPP)

S.L.P. MOD BUBINGA – PHILO TSOUNGUI MODEL

This S.L.P. Mod Bubinga “Artist Model” is a special collaboration with Philo Tsoungui of The Mars Volta. Philo studied classical percussion and has been active in a wide range of musical genres, from Rock to Jazz and Hip Hop. Based on the regular LBU127, this version features an EVANS Genera Dry batter head for a tight, controlled, and dryer sound, and finished in custom Electro Turquoise, perfectly complementing Philo’s unique blend of musical styles.



LBU127P

Shell: 6.0mm, 9ply Bubinga
Size: 12”x7”
Hoops: Sound Arc Hoop (6 hole)
Batter side: 2.3mm
Snare side: 1.6mm
Lugs: MSL-SCT
Strainer / Butt: MLS30A/MLS30B
Snare Wire: Starclassic 20-strand Carbon Steel Snare Wires
Head: Evans® Genera Dry / Evans® Snare Side
Finish: Electro Turquoise (ETQ)



6.0mm, 9ply Bubinga Shell



Evans® Genera Dry Drumhead



Electro Turquoise (ETQ)



REGULAR SNARE DRUMS

SIGNATURE PALETTE – SIMON PHILLIPS

A new Simon Phillips Signature model crafted with African Mahogany is 8ply/6mm, with a deeply rich & warm tone. The snare drum is paired with the Customized Brass Mighty Hoops for crisp attack and Steel Sensitive snare wires to capture Simon's intricate playing with precision.

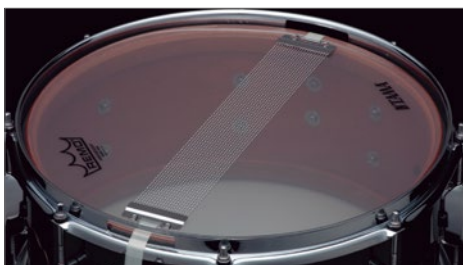


SP1465

Shell: 6.0mm, 8ply Mahogany w/ 6.0mm Sound Focus Rings
Size: 14"x6.5"
Hoops: Customized Brass Mighty Hoop (8 hole)
Lugs: MSL90S
Strainer / Butt: MLS50A / MLS50B
Snare Wire: 20-strand Carbon Steel Snare Wires
Head: Remo® Coated Ambassador / Remo® Snare Ambassador



6.0mm, 8ply Mahogany Shell w/ 6.0mm Sound Focus Rings



20-strand Carbon Steel Snare Wires



Customized Brass Mighty Hoop (8 hole)

STARPHONIC SPRUCE

This Starphonic series snare drum features an all Spruce shell. A popular wood for acoustic guitars, Spruce has a warm and pleasant high-mid tone. Featuring 8-lugs and TAMA's unique Grooved Hoop, this snare drums delivers sharp attack with clear and controlled projection, beautifully complementing Spruce's mellow tone. Finished with center stripe detailing that emphasizes the luxurious look and feel of Spruce.



PSP146E

Shell: 8.0mm, 9ply Spruce
Size: 14"x6"
Hoops: Grooved Hoop
Lugs: Freedom Lug
Strainer / Butt: MLS50A / MLS50B
Snare Wire: Super Sensitive Hi-Carbon Snare Wires (MS20RL14C)
Head: Evans® G1 Coated / Evans® Snare Side
Finish: Satin Natural Spruce (SSC)



8.0mm, 9ply Spruce Shell



Brown Finished Inlay



Grooved Hoop



REGULAR MIRROR ROD

An Advanced TAMA Innovation

The Mirror Rod is a double pedal connecting rod designed to eliminate play and deliver an overwhelmingly smooth playing experience. By utilizing ball bearings, lightweight materials, a streamlined design, and concentrating the weight at the central axis, an extremely precise motion is achieved, eliminating pedal lag or play. An extreme ease of operation is achieved by a simplified pedal attachment and length adjustment design.



TMR1000



Zero Latency with Ball Bearings



Easy & Quick Setup / Memory Lock



Optimized Bearing Position

For extremely smooth action, the Mirror Rod is equipped with a total of 8 ball bearings (four per side). As the Mirror Rod's most innovative feature, these ball bearings are located as close as possible to the center axis of rotation, reducing torque and allowing for fast, zero latency action.





LIMITED

MIRROR ROD SPECIAL BUNDLE PACK

The Mirror Rod Special Bundle Pack is a limited edition package that combines the overwhelmingly smooth Mirror Rod with Iron Cobra, Speed Cobra, or Dyna-Sync Pedals.



HPDS1TWMR



HP910LWNMR



HP900PWNMR





REGULAR ACCESSORIES

4" PRACTICE PAD - TRAVELER PAD

A compact and extremely portable 4" silicone practice pad that fits in your pocket. With a realistic feel and a low volume sound, you can practice anytime & anywhere. Available in three colors: black, pink, and yellow.



TTP4BK



TTP4PK



TTP4YL



Textured Non-Slip Base

The bottom side of the pad is textured with a fine grid pattern to prevent movement while playing.



Multi-Stack Design

The top & bottom of the pad are made to fit perfectly together, allowing you to stack multiple pads on top of another to achieve a variety of different feels.

RING MUTE



RM14P3

A 1" wide thin plastic 14" diameter snare drum mute. Place it on the batter side head to cut out overtones and achieve a tighter & dryer sound. Available in a pack of 3pcs.



TAMA[®]

THE STRONGEST NAME IN DRUMS

©2024-2025 TAMA DRUMS (E)